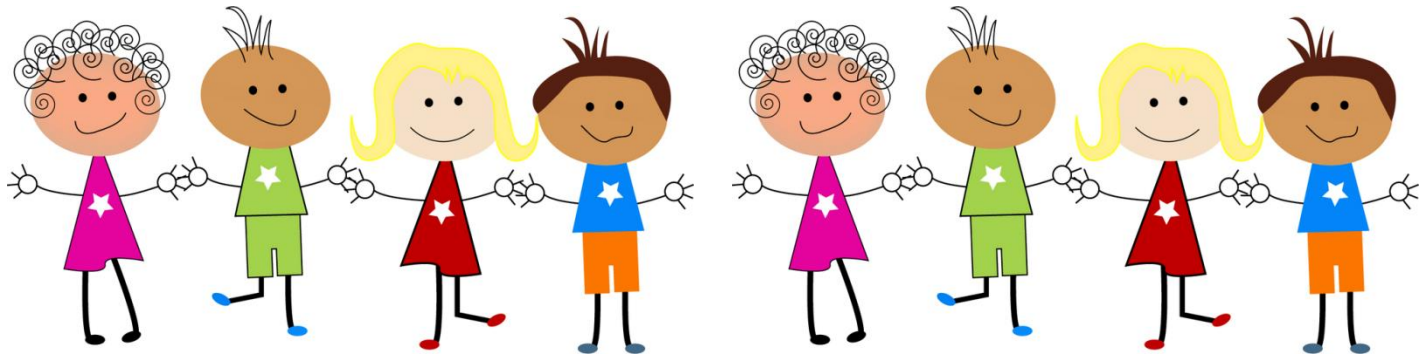
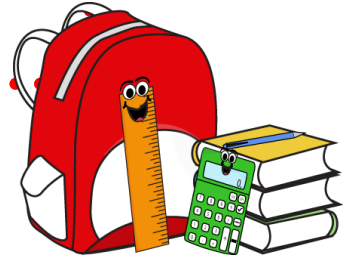


Welcome to Class 1

Miss Wilson



Class 1



- Classroom support- Mrs Ryder
- Transition from reception

The children will start to become more independent. They will be expected to choose their own lunch, hand their book in when it needs changing, look after their own jumpers and know when they have an after school club.

- Our class is a mix of reception children and year 1 children. Year 1 work from National Curriculum.

PE every Tuesday, please ensure your child brings their water bottle every day with fresh water in.

Structure of the morning

- 9am – 9.40am. Early morning session to include guided reading, individual reading, handwriting, spellings and phonics.
- Spellings will be given out on a Monday and the test will take place on Friday
- 9.40am – 10.30am English
- 10.30am -10.45am Whole school collective Worship
- 10.45am – 11am Playtime (All KS1)
- 11am – 11,50am Maths

Structure of the afternoon

Varies depending on each day but will include:

- PE (Tuesday) Lead by a sports specialist
- Science
- Art/DT
- History/Geography
- ICT
- PSHCE
- RE
- Music

Our class will become a mixed year 1/2 class in the afternoon.

Our first topic is Under the Sea.

Actions and consequences

Stage 1 – Name recorded on board as a warning

Stage 2 – Mark recorded next to name on board as final warning

Stage 3 – Time out in class

Stage 4 – Time out in alternative class

Stage 5 – Time out at playtime with reflection sheet

Stage 6 – Time out at lunchtime

Stage 7 – Senior leader intervention (could result in parental engagement and/or exclusion)

Homework

- Homework and spellings will be given out on a Monday. Homework will be set on Seesaw and spellings given as a sheet.
- Children may receive maths homework (mathletics or sheets) or comprehension/ writing activities.
- Reading books will be sent home every evening. Books will be children once a week. Children should be re-reading books to build on their understanding and comprehension skills. Reading will be monitored.

Reading

- Strong emphasis on reading across school.
- **Reading for pleasure will significantly impact upon your child's confidence in reading and their achievement in reading overall (and across the wider curriculum)**
- Children will bring a reading book home daily which we will change on a Wednesday. The children will also continue to bring home a reading challenge book.
- Comprehension

Target setting and reports

- Your child will have targets set for maths, writing, reading and attitude to learning each half term.
- These will be agreed with your child following discussion at the start of each half term.
- These will be shared with parents, who will have opportunity to comment on and offer support at home.
- Children and teachers will assess progress each half term and once again share details with parents.



Any questions?

Thank you for taking time to attend this presentation!
We look forward to working with you and your child this year. It will be a wonderful year with lots of exciting opportunities and learning activities.

